

Giant carving on Mars may be evidence of alien civilization... **FACE IN SPACE**

NEW EVIDENCE that a giant face may have been carved on Mars by an alien super-civilization has been uncovered by two photograph enhancement experts who work for NASA.

They say the face is too detailed to have been formed by the forces of nature.

And two top space phenomena investigators believe it may have been created by intelligent life that used Mars as a way station on inter-galactic flights.

The blurry photograph was largely ignored by space experts when taken from 200 miles above Mars and beamed back to earth by the Viking spacecraft. NASA described it as an unusual but natural rock formation.

Enlarged and clarified by a new computer technique, the photograph shows a forehead, nose, chin, eye socket and eyeball. What appears to be long hair — or the edge of a space helmet — frames one side of the face.

"It's very puzzling — we're convinced that what is shown could not have been formed by wind, water or atmosphere," said scientist Gregory Molenaar, 38, of Glendale, Maryland.

"Certainly, nature has not created such sculpture on earth. That raises the question — was it created by some form of intelligent life?"

Molenaar, a computer specialist who works under contract with NASA dismissed the Viking picture as just a natural occurrence when it was first published. He became interested when he found the original photograph plus some later Viking photos of the same formation in NASA files.

He obtained the originals and got together with a

by **WILLIAM DICK**

friend, electronics expert Vincent Dipietro, 40, who also works under contract to NASA.

Together they developed a new advanced computer enhancement process called SPIT — starburst pixel interleaving technique — and used it on the photos of the face in space.

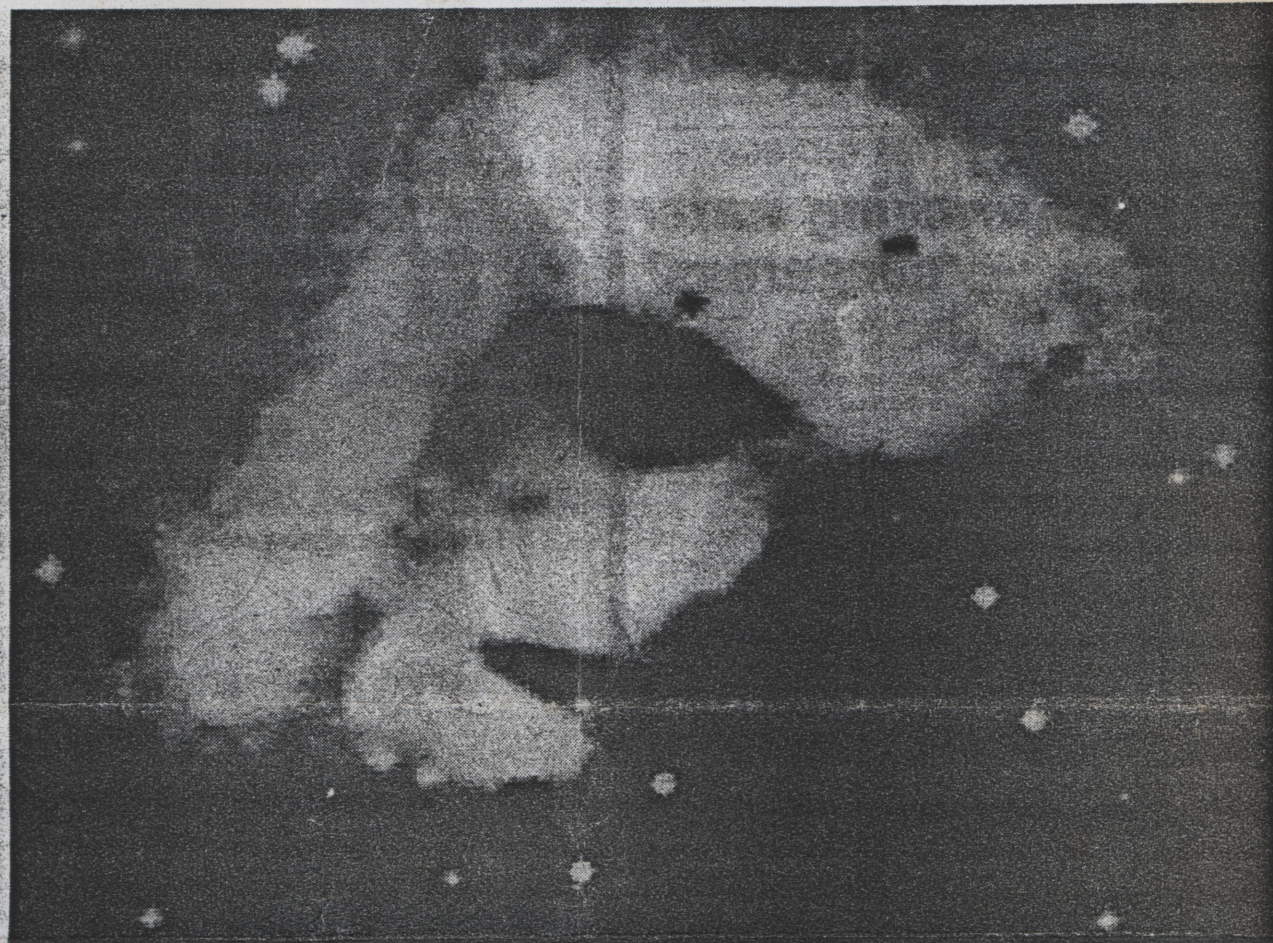
Pixels are the smallest units of information beamed back by the spacecraft. Placed together in sequence, they produce a photograph of different shades of gray.

The two scientists were able to improve the quality of the pixel images, smoothing out rough edges to give greater definition to the photograph.

"We were able to ascertain that the features were not caused by transmission faults or tricks of light," Molenaar said. "The features were clearly etched, including what appears to be an eyeball in the eye socket."

The two photo experts are calling on NASA to make further investigation of the face a priority, even though the agency has abandoned its Search For Extra Terrestrial Intelligence program.

The Red Planet is too in-



• Experts say face on Mars is too detailed to have been formed by nature — it is more likely to work of intelligent aliens. Photo shows what appears to be a forehead, nose, chin, eye socket and eyeball

hospitable to presently support intelligent life as we know it, but many scientists believe that it had a habitable atmosphere in the past.

"Close up photos from a remote craft could give us evidence of extra-terrestrial life being involved in creat-

ing the face," said Molenaar.

Coral Lorenzen of Tucson, Arizona, secretary of the Acrial Phenomenon Research Organization, said: "For many years I have felt there is a link between Mars and intelligent alien life be-

cause it is documented that more UFO sightings are made when Mars is at its closest to earth.

"I believe that if Mars has not been fully inhabited in the past it certainly is used as a way station by a space civilization.

"It is entirely possible that this face was either produced by this civilization for their own pleasure or as a sign to us that they are there. Significantly, there are many similarities between the face on Mars and the face imprinted on the Shroud of Turin."